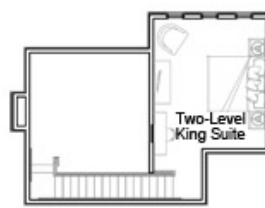
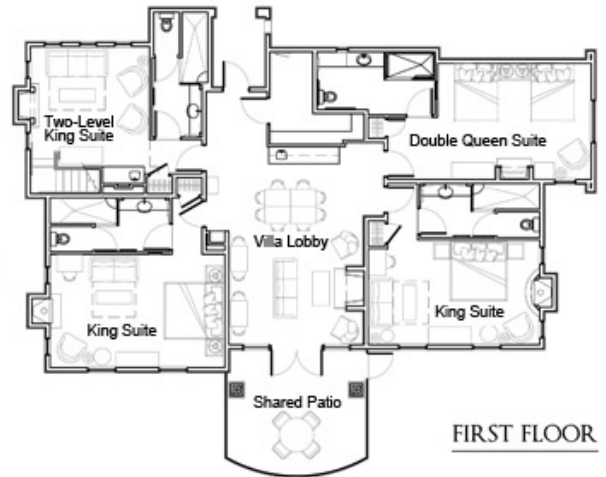


Jan Hainsey's Aladdin Ladies Trip - April 25-27, 2025

THE VILLAS AT GERVASI VINEYARD



SECOND FLOOR



FIRST FLOOR

Villa Suite Amenities

- Villa Lobby with complimentary beverages and icemaker
- Italian-style Continental breakfast delivered to the Villa Lobby (complimentary)
- Fireplace in every suite
- Luxurious spacious bathroom with walk-in stone shower
- Hair dryer, luxury toiletries
- Heated towel bars, plush linens
- Multiple flat-screen televisions
- Clock radio with iPod dock
- Complimentary Wi-Fi
- In-room coffee makers
- In-room safe, refrigerator, iron
- Heated tile floors (winter months)
- Daily housekeeping

BEAUTIFUL TUSCAN-INSPIRED SUITES

Upon entering our Tuscan Style Villa, a spacious lobby greets you with comfortable Tuscan Style decor featuring portals to four private suites. Guests have the option of reserving an individual suite or an entire Villa. Reserving an entire Villa allows guest exclusive use of lobby area and patio. The lobby area features living room seating, dining seating, stone fireplace, microwave, ice maker, refrigerator and sink. Rear access to patio and outdoor seating.

Double Queen Luxury Suite

Our Double Queen Luxury Suites will welcome and delight you. These spacious 378 sq. ft. suites feature two dreamy queen beds and all of the pleasantries described. Make yourself a cup of coffee and relax in front of the fireplace in this well-appointed room. The Double Queen Suite will comfortably sleep four adults.

King Luxury Suite

The King Luxury Suite features one king bed and a pull-out love seat, all stylishly situated in ample 348 to 368 sq. ft. rooms and complete with the luxuries described. Adorned with attention to fine details, the King Luxury Suite retreat will evoke the unique style of Tuscany. The King Luxury Suite will comfortably sleep three adults or two adults and two children utilizing the pull-out love seat.

Two-Level King Luxury Suite

This palatial suite features a lower level living room with pull out full-size sofa, walk up bar and a full bath. Upstairs, you'll find a massively inviting, canopy king bed. All 603 sq. ft. of this suite offer you VIP relaxation, complete with all amenities described. This suite was designed with two levels of comfort in mind for the ultimate in rest and relaxation. The Two-Level King Luxury Suite will comfortably sleep four adults or two adults and two children, utilizing the pull-out sofa.